



Li StarFish S.r.l.
Via Cavour, 35 - 20063 Cernusco S/N (MI), Italy
Tel. +39-02-92150794 - Fax. +39-02-92157285
info@listarfish.it - www.listarfish.it

For life science research only. Not for use in diagnostic procedures. FOR IN VITRO USE ONLY.

Store at 2 – 8 °C

M30 CytoDEATH™ Biotin

200 tests (Prod. No. PEV- 10750)

Mouse monoclonal antibody (Clone M30)

For the detection of caspase-cleaved Cytokeratin 18 neo-epitope M30

1. Product Description

Name: M30 CytoDEATH™ Biotin
Clone: M30
Isotype: IgG2b
Immunogen: Cytokeratin-18 fragments purified from supernatant from human carcinoma cell line WiDr CCL218.
Epitope: CK18 fragment aa284-396

1.1 Formulation

Clear solution. 50 µg of M30 CytoDEATH™ Biotin monoclonal antibody provided in 200 µl PBS containing 0.1 % BSA, PEG, sucrose and 0.09 % sodium azide.

1.2 Specificity

M30 CytoDEATH™ Biotin antibody is recommended for the detection of the formalin-resistant M30 neo-epitope on human, monkey and bovine caspase-cleaved cytokeratin 18 (CK18) cytoskeletal protein. M30 CytoDEATH™ Biotin does not recognize intact CK18.

1.3 Recommended applications

- Western blot (WB)
- Immunocytochemistry (ICC)
- Flow cytometry (FACS)
- Immunohistochemistry (IHC) including formalin-fixed and paraffin-embedded tissue sections (PS) and cryostat sections (FS)

1.4 Working solution

M30 CytoDEATH™ Biotin is provided in a convenient ready-to-use stock solution. Use a dilution 1:100 in Incubation Buffer (final concentration 2.5 µg/ml).

1.5 Storage and stability

The M30 CytoDEATH™ Biotin antibody is provided in a ready-to-use format and is stable at 2 – 8 °C through the expiration date printed on the label.

Alternatively, it can be stored in aliquots at -20°C.

The antibody is shipped at ambient temperature.

Note: Repeated freezing and thawing should be avoided.

1.6 Quality control

M30 CytoDEATH™ Biotin antibody is function tested using immunohistochemistry of formalin-fixed and paraffin-embedded tumor specimen.

Benefits	Features
Sustained signal from cells at early to later stages of apoptosis	In contrast to measuring i. e. active caspase-3, where the signal is defined to a limited time window and decreases at late stages of apoptosis, the caspase-generated CK18 neo-epitope can still be detected even after apoptotic cells have disintegrated.
Superior sensitivity	The Cytokeratin 18 neo-epitope is an accumulating substrate generated by few activated caspase molecules.
Assay is independent of the activation of a single caspase	Cytokeratin 18 is cleaved in vivo by several effector caspases, including caspase-3, 6, 7 and 9.
Clear results	Apoptotic cells are clearly distinguishable from viable cells or necrotic cells.
Apoptosis specific	Whereas TUNEL analysis can give rise to false positive results under conditions when DNA double-strand breaks occur, detection of the CK18 neo-epitope using the M30 CytoDEATH™ antibody shows superior specificity for apoptotic cells compared to TUNEL.
Specificity for epithelial (i.e. carcinoma) apoptosis	Expression pattern of CK18 is restricted to cells of epithelial origin. Lymphoid and neuronal cell apoptosis is not detected by M30 CytoDEATH™ antibody.
Broad species reactivity	The Cytokeratin 18 neo-epitope recognized by M30 CytoDEATH™ antibody is conserved between human, monkey and cattle.
Application versatility	The M30 CytoDEATH™ antibody has been successfully used in Western blot, immunocytochemistry, flow cytometry and immunohistochemistry, including frozen and formalin-fixed, paraffin-embedded tissue sections.
Recommended for formalin-fixed paraffin-embedded tissue	Recommended for routinely fixed tissue samples. Retrospective studies are possible.

M30 CytoDEATH™ – Key advantages

Benefits	Features
Early and specific detection of apoptosis	Detects caspase-cleaved cytokeratin 18; caspase activity is one of the earliest and most common markers for apoptosis.

M30 CytoDEATH™ Biotin – additional advantages

Benefits	Features
Added convenience for immunohistochemistry	Two-step tool for the detection of apoptosis in epithelial cells by immunohistochemistry. No additional anti-mouse IgG biotin conjugated secondary antibodies required.

2. Background Information

2.1 Caspase substrate CK18 and apoptosis in epithelial cells

Apoptosis induced by either death-inducing receptors or other stimuli leads to activation of specific caspases [1, 2]. Subsequently, apoptotic cells are eliminated by an intrinsic suicide program, resulting in DNA fragmentation, nuclear condensation, cytoskeletal reorganization, plasma membrane blebbing and loss of cell adhesion.

Cytokeratin 18 (CK18) is a type I intermediate filament protein and the major component of single-layer and glandular epithelial cells. It is expressed in most types of carcinomas such as lung, liver, prostate, breast and colon, whereas CK18 is absent in lymphoid and neuronal cells and tissues. During apoptosis after initiation of effector caspases 3, 6, 7 and 9, CK18 is cleaved into proteolytic fragments liberating neo-epitopes (NE) at the cleavage sites [3-6].

2.2 M30 CytoDEATH™ antibody for the specific detection of apoptosis

CK18 is cleaved by caspases, liberating a neo-epitope (M30) that is specifically recognized by the M30 CytoDEATH™ monoclonal antibody. Specific proteolytic cleavage of CK18 is an event taking place before disruption of membrane asymmetry and DNA strand breaks occur. Numerous studies confirm that M30 CytoDEATH™ antibody detects only apoptotic but not viable or necrotic cells. Reactivity of M30 CytoDEATH™ antibody in immunohistochemistry is associated with the apoptosis index by TUNEL and shows superior reliability in conditions when DNA double-strand breaks occur independent of apoptosis [7].

The capacity of M30 CytoDEATH™ antibody in flow cytometry and immunohistochemistry studies to distinguish between necrotic and apoptotic epithelial cells has been verified in several disease entities. Consequently, M30 CytoDEATH™ antibody represents a unique tool for easy and reliable determination of apoptosis from very early until well advanced stages in single cells and tissue sections of epithelial origin [8].

Moreover, there are two M30 CytoDEATH™ antibody-based ELISAs available:

- M30 CytoDeath™ ELISA (PEVIVA Prod. No.: 10900) is suggested to serve as a high-throughput assay for functional screening and *in vitro* characterization of effective pro-apoptotic drugs using cell culture supernatants, and spheroid or tissue lysates.
- The CE-marked M30-Apoptosense™ ELISA (PEVIVA Prod. No: 10010) has been successfully used to determine elevated CK18 neo-epitope levels in blood samples from patients as a useful biomarker to monitor response to treatment or disease staging [9-12].

3. Procedures and Materials required

3.1 Procedure for immunofluorescence and flow cytometry

3.1.1 Introduction

The use of M30 CytoDEATH™ Biotin antibody in immunofluorescence and flow cytometry requires additional secondary reagents conjugated to a fluorochrome.

Please note: a fluorescein-conjugated M30 CytoDEATH™ antibody is available from PEVIVA (Prod. No: 10800). The M30 CytoDEATH™ Fluorescein antibody is recommended for immunofluorescence and flow cytometry applications for convenient one-step apoptosis detection.

The following procedure describes the detection of apoptosis with M30 CytoDEATH™ antibody in immunofluorescence and flow cytometry. If using other detection methods or sample material, the conditions may vary and have to be adapted.

Additional reagents required

- PBS, Methanol and BSA
- Secondary detection reagents such as streptavidin-fluorescein (i.e. from DAKO)

Preparation of working solutions

Incubation Buffer: PBS containing 1% BSA

Washing Buffer: PBS

Preparation of M30 CytoDEATH™ Biotin antibody working solution

Dilute the M30 CytoDEATH™ Biotin antibody stock solution 1:100 in Incubation Buffer (final concentration 2.5 µg/ml).

Note: The antibody solutions should be free of precipitate. If necessary, centrifuge the solution at high speed prior to use.

3.1.2 Immunofluorescence and flow cytometry protocol

Step	Action
1	Wash cells in PBS.
2	Fix cells in ice-cold pure methanol at -20 °C for 30 min.
3	Wash cells with Washing Buffer twice.
4	Remove Washing Buffer.
5	Incubate with 100 µl M30 CytoDEATH™ Biotin antibody for 30 min at 15 – 25 °C.
6	Wash cells with Washing Buffer twice.
7	Incubate with 100 µl fluorescein-conjugated streptavidin for 30 min at 15 – 25 °C in the dark.
8	Wash cells with Washing Buffer twice.
7	Examine the cells on a slide under the fluorescence microscope, or, dilute cells in 0.5 ml PBS and store samples in the dark until analysis by flow cytometry.

3.2 Procedure for Immunohistochemistry

3.2.1 Introduction

The following procedure describes the detection of apoptosis with M30 CytoDEATH™ Biotin antibody in a two step method in immunohistochemistry (paraffin-embedded tissue) for maximal sensitivity. If using other detection methods or sample material, the conditions may vary and have to be adapted.

3.2.2 Recommended reagents

For preparation of samples:

- Xylo
- Ethanol 96 %
- Ethanol 70 %
- Methanol/ H₂O₂ (3 %)
- Citric acid
- NaOH, 1 M
- Hematoxylin (i.e. from Merck)
- Mounting medium (i.e. Kaiser's glycerine gelatine from Merck)

For the immunohistochemistry procedure:

- Streptavidin-POD (i.e. from DAKO)
- DAB or AEC substrate (i.e. from Zymed)
- PBS
- BSA

Preparation of working solutions

The following table list the working solutions needed to perform the immunohistochemistry staining procedure.

Working Solution	Composition	Stability/ storage	Use
Washing Buffer	PBS	4 weeks at 2 – 8 °C	Washing step
Incubation Buffer	PBS containing 1 % BSA	4 weeks at 2 – 8 °C	Preparation of antibody working solution
Citric acid buffer (0.01M)	2 g/l citric acid, pH 6.0 adjusted with 1 M NaOH	4 weeks at 2 – 8 °C	Antigen retrieval

Preparation of M30 CytoDEATH™ Biotin antibody working solution

Dilute the M30 CytoDEATH™ Biotin antibody stock solution 1:100 in Incubation Buffer (final concentration 2.5 µg/ml).

Note: The antibody solutions should be free of precipitate. If necessary, centrifuge the solution at high speed prior to use.

Preparation of sample material

Before starting the immunohistochemical protocol, dewax paraffin-embedded tissue sections as described in the following table.

Step	Action
1	Place paraffin-embedded sections into an incubator at 37°C over night to air-dry.
2	To dewax formalin-fixed, paraffin-embedded tissue sections, process the sections as follows: <ul style="list-style-type: none"> • 2 coplin jars of xylol (2 – 5 min), • 2 coplin jars of ethanol (96 %) • 1 coplin jar of ethanol (70 %) • 1 coplin jar of methanol/H₂O₂ (3 %) for 10 min at 15 – 25 °C.
3	Rinse 10 min in PBS.

Note: The sections should not be allowed to dry during this procedure.

3.2.3 Immunohistochemistry protocol

Note: For optimal results it is highly recommended to follow the below mentioned method for antigen retrieval.

Step	Action
1	<ul style="list-style-type: none"> • Prewarm citric acid buffer (0.01 M, pH 6.0) by incubation in a microwave oven at 750 W until solution boils. • When the solution is boiling, turn the setting of the microwave oven to “keep warm” (about 100 W). • Place tissue section slides in a slide rack and put them into the heated citric acid solution (approx. 90°C). • Incubate at this setting for 20 min. <p>Note: For optimal morphology it is recommended to keep the solution shortly below the boiling point to avoid gas formation under the sections.</p>
2	Rinse 3 × in PBS and incubate 10 min in a separate jar of PBS to cool down.
3	Remove Incubation Buffer and add 100 µl M30 CytoDEATH™ Biotin antibody working solution for 30 min at 15 – 25 °C in a humid chamber.
4	Wash slides in Washing Buffer (use 3 separate jars and dip 3 × into each jar).
5	Cover the section with 100 µl of streptavidin-POD according to your established optimized procedure for the reagent from your selected supplier, or, use DAKO reagent at 1:600 dilution. Incubate for 30 min at 15 – 25 °C in a humid chamber.
6	Wash slides in Washing Buffer (use 3 separate jars and dip 3 × into each jar).
9	Incubate slides in a freshly prepared substrate solution (i. e. AEC) at 15 – 25 °C until a clearly visible color develops (1 – 5 min). A negative control should not show any development of color during the incubation period.
10	Stop the reaction by extensive rinsing in double distilled water.
11	Subsequently, counterstain the preparation with hematoxylin and mount the section (i. e. Kaiser’s glycerine gelatine when using AEC).

4. Results

Immunocytochemistry

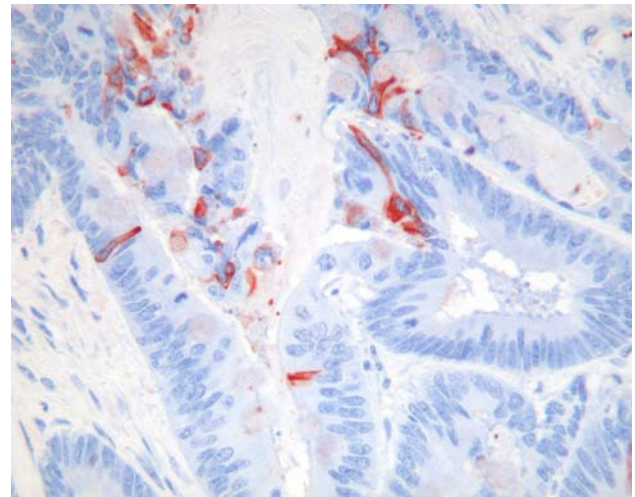


Figure: Detection of apoptosis in a formalin-fixed and paraffin-embedded tissue section from a human colon cancer showing confined cytoplasmic staining for CK18-Asp396-NE (caspase-cleaved CK18) using M30 CytoDEATH™ Biotin. Secondary detection with streptavidin-POD and AEC as substrate, counterstained with hematoxylin.

5. Appendix

CK18 positive cell lines and tissues successfully analyzed with the M30 CytoDEATH™ antibody:

Human epithelial cell lines:

Breast cancer: MDA-MB-231, MCF-7, HBL100
Colon cancer: WiDr, HCT 116, HT29, SW620
Cervical cancer: HeLa
Kidney cancer: ACHN, A498
Head & neck cancer: SCC9, SCC25, FaDu
Prostate cancer: PC-3, LNCaP, DU 145
Bladder cancer: RT4, J82

Human epithelial tissues:

Breast, lung, liver, colon, pancreas, intestine, kidney, salivary gland, trophoblast, endometrium, bladder, oral epithelium.

6. Related Products

M30 CytoDEATH™	Prod. No. PEV-10700
M30 CytoDEATH™ FITC	Prod. No. PEV-10800
M30 CytoDEATH™ Orange	Prod. No. PEV-10830
M30 CytoDEATH™ Red	Prod. No. PEV-10850
M30-Apoptosense® ELISA	Prod. No. PEV-10010
M65® ELISA	Prod. No. PEV-10020
M30 CytoDeath™ ELISA	Prod. No. PEV-10900

7. References

1. Creagh EM, Conroy H, Martin SJ. (2003) Caspase-activation pathways in apoptosis and immunity. *Immunol Rev.* 193:10-21
2. Creagh EM, Martin SJ. (2001) Caspases: cellular demolition experts. *Biochem Soc Trans.* 29: 696-702.
3. Caulin C, Salvesen GS, Oshima G. (1997) Caspase Cleavage of keratin 18 and reorganization of intermediate filaments during epithelial cell Apoptosis. *J Cell Biol.* 138: 1379-1394.
4. Leers MP, Kölgen W, Björklund V, Bergman T, Tribbick G, Persson B, Björklund P, Ramaekers FCS, Björklund B, Nap M, Jörnvall H, Schutte B. (1999) Immunocytochemical detection and mapping of a Cytokeratin 18 neo-epitope exposed during early apoptosis. *J Pathol.* 187: 567-572.
5. Schutte B, Henfling M, Kolgen W, Bouman M, Meex S, Leers MP, Nap M, Björklund V, Björklund P, Björklund B, Lane EB, Omary MB, Jörnvall H, Ramaekers FC. (2004) Keratin 8/18 breakdown and reorganization during apoptosis. *Exp Cell Res.* 297:11-26.
6. Dinsdale D, Lee JC, Dewson G, Cohen GM, Peter ME. (2004) Intermediate filaments control the intracellular distribution of caspases during apoptosis. *Am J Pathol.* 164: 395-407.
7. Walker JA and Quirke P. (2001) Viewing apoptosis through a "TUNEL". *J Pathol.* 95: 275-276.
8. Grassi A, Susca M, Ferri S, Gabusi E, D'Errico A, Farina G, Maccariello S, Zauli D, Bianchi FB, Ballardini G. (2004) Detection of the M30 neoepitope as a new tool to quantify liver apoptosis: timing and patterns of positivity on frozen and paraffin-embedded sections. *Am J Clin Pathol.* 121: 211-219.
9. Bivén K, Erdal H, Hägg M, Ueno T, Zhou R, Lynch M, Rowley B, Wood J, Zhang C, Toi M, Shoshan MC, Linder S. (2003). A novel assay for discovery and characterization of pro-apoptotic drugs and for monitoring apoptosis in patient sera. *Apoptosis* 8: 263-268.
10. Ueno T, Toi M, Bivén K, Bando H, Ogawa T, Linder S. (2003) Measurement of an apoptosis product in the sera of breast cancer patients. *Eur J Cancer* 39: 769-774.
11. Kramer G, Erdal H, Mertens H, Nap M, Mauermann J, Steiner G, Marberger M, Bivén K, Shoshan MC, Linder S. (2004) Differentiation between cell death modes using measurements of different soluble forms of extracellular cytokeratin 18. *Cancer Res.* 64: 751-1756.
12. Linder S, Havelka AM, Ueno T, Shoshan MC. (2004) Determining tumor apoptosis and necrosis in patient serum using cytokeratin 18 as a biomarker. *Cancer Lett.* 214: 1-9.

8. M30 CytoDEATH™ Application References

Western blot (WB)

- Leers MP, Kölgen W, Björklund V, Bergman T, Tribbick G, Persson B, Björklund P, Ramaekers FCS, Björklund B, Nap M, Jörnvall H, Schutte B. (1999) Immunocytochemical detection and mapping of a Cytokeratin 18 neo-epitope exposed during early apoptosis. *J Pathol.* 187: 567-572.
- Ueno T, Toi M, Bivén K, Bando H, Ogawa T, Linder S. (2003) Measurement of an apoptosis product in the sera of breast cancer patients. *Eur J Cancer* 39: 769-774.
- Sheard MA, Vojtesek B, Simickova M, Valik D. (2002) Release of Cytokeratin-18 and -19 Fragments (TPS and Cyfra 21-1) into the extracellular space during apoptosis. *J Cell Biochem* 85: 670-677.
- Thurnher D, Turhani D, Pelzmann M, Wannemacher B, Knerer B, Formanek M, Wacheck V, Selzer E. (2003) A new cytotoxic compound against malignant head & neck cancer cells. *Head & Neck* 25: 732-740.
- Schutte B, Henfling M, Kolgen W, Bouman M, Meex S, Leers MP, Nap M, Björklund V, Björklund P, Björklund B, Lane EB, Omary MB, Jörnvall H, Ramaekers FC (2004) Keratin 8/18 breakdown and reorganization during apoptosis. *Exp Cell Res.* 297:11-26.

Immunocytochemistry (ICC)

- MacFarlane M, Merrison W, Dinsdale D, Cohen GM. (2000) Active caspases and cleaved cytokeratins are sequestered into cytoplasmic inclusions in TRAIL-induced apoptosis. *J Cell Biol.* 148: 1239-1254.
- Barrett KL, Willingham JM, Garvin AJ, Willingham MC. (2001) Advances in cyto-chemical methods for detection of apoptosis. *J Histochem Cytochem* 49: 821-32.
- Lee JC, Schickling O, Stegh AH, Oshima RG, Dinsdale D, Cohen GM, Peter ME. (2002) DEDD regulates degradation of intermediate filaments during apoptosis. *J Cell Biology* 158: 1051-1066.
- Dinsdale D, Lee JC, Dewson G, Cohen GM, Peter ME. (2004) Intermediate filaments control the intracellular distribution of caspases during apoptosis. *Am J Pathol.* 164: 395-407.
- Schutte B, Henfling M, Kolgen W, Bouman M, Meex S, Leers MP, Nap M, Björklund V, Björklund P, Björklund B, Lane EB, Omary MB, Jörnvall H, Ramaekers FC. (2004) Keratin 8/18 breakdown and reorganization during apoptosis. *Exp Cell Res.* 297:11-26.

Flow cytometry (FACS)

- Rupa JD, DeBruine AP, Gerbers AJ, Leers MP, Nap M, Kessels AG, Schutte B, Arends JW. (2003) Simultaneous detection of apoptosis and proliferation in colorectal carcinoma by multiparameter flow cytometry allows separation of high and low-turnover tumors with distinct clinical outcome. *Cancer* 97: 2404-2411.
- Morsi HM, Leers MP, Radespiel-Troger M, Björklund V, Kabarity HE, Nap M, Jäger W. (2000) Apoptosis, bcl-2 expression, and proliferation in benign and malignant endometrial epithelium: An approach using multiparameter flow cytometry. *Gynecol. Oncol.* 77, 11-7.

Immunohistochemistry (IHC)

- Morsi HM, Leers MP, Jäger W, Björklund V, Radespiel-Troger M, el Kabarity H, Nap M and Lang N. (2000) The patterns of expression of an apoptosis-related CK18 neoepitope, the bcl-2 proto-oncogene, and the Ki67 proliferation marker in normal, hyperplastic, and malignant endometrium. *Int J Gynecol. Pathol.* 19: 118-126.
- Bantel H, Ruck P, Gregor M, Schulze-Osthoff K. (2001) Detection of elevated caspase activation and early apoptosis in liver diseases. *Eur J Cell Biol.* 80: 230-239
- Fukuda M, Tanaka A, Kitada M, Fukuda F, Suzuki S, Jiang Y, Kebusa Y, Ohno J, Yamamoto Y, Minato H, Nonomura A, Sakashita H, Kusama K. (2001) Immunohistochemical detection of cytokeratin 18 and its neo-epitope in Warthin's tumor (adenolymphoma) of the parotid glands. *Anticancer Res* 21:109-12.
- Leers MP, Björklund V, Björklund B, Jörnvall H, Nap M. (2002) An immunohistochemical study of the clearance of apoptotic cellular fragments. *Cell Mol. Life Sci.* 59: 1358-1365.
- Grassi A, Susca M, Ferri S, Gabusi E, D'Errico A, Farina G, Maccariello S, Zauli D, Bianchi FB, Ballardini G. (2004) Detection of the M30 neoepitope as a new tool to quantify liver apoptosis: timing and patterns of positivity on frozen and paraffin-embedded sections. *Am J Clin Pathol.* 121: 211-219.
- Koornstra JJ, Rijcken FE, De Jong S, Hollema H, De Vries E, Kleibeuker JH. (2004) Assessment of apoptosis by M30 immunoreactivity and the correlation with morphological criteria in normal colorectal mucosa, adenomas and carcinomas. *Histopathol.* 44: 9-17.
- Takada M, Kataoka A, Toi M, Bando H, Toyama K, Horiguchi S, Ueno T, Linder S, Saji S, Hayashi Y, Funata N, Kinoshita J, Murakami S, Ohono S. (2004) A close association between alteration in growth kinetics by neoadjuvant chemotherapy and survival outcome in primary breast cancer. *Int J Oncol.* 25: 397-405.
- Simopoulos C, Tsaroucha AK, Asimakopoulos B, Giatromanolaki A, Gavriilidis P, Polychronidis A, Karayiannakis A. (2008) Total and caspase-cleaved cytokeratin 18 in chronic cholecystitis: a prospective study. *BMC Gastroenterol.* 8:14-18.



Li StarFish distribuisce:

